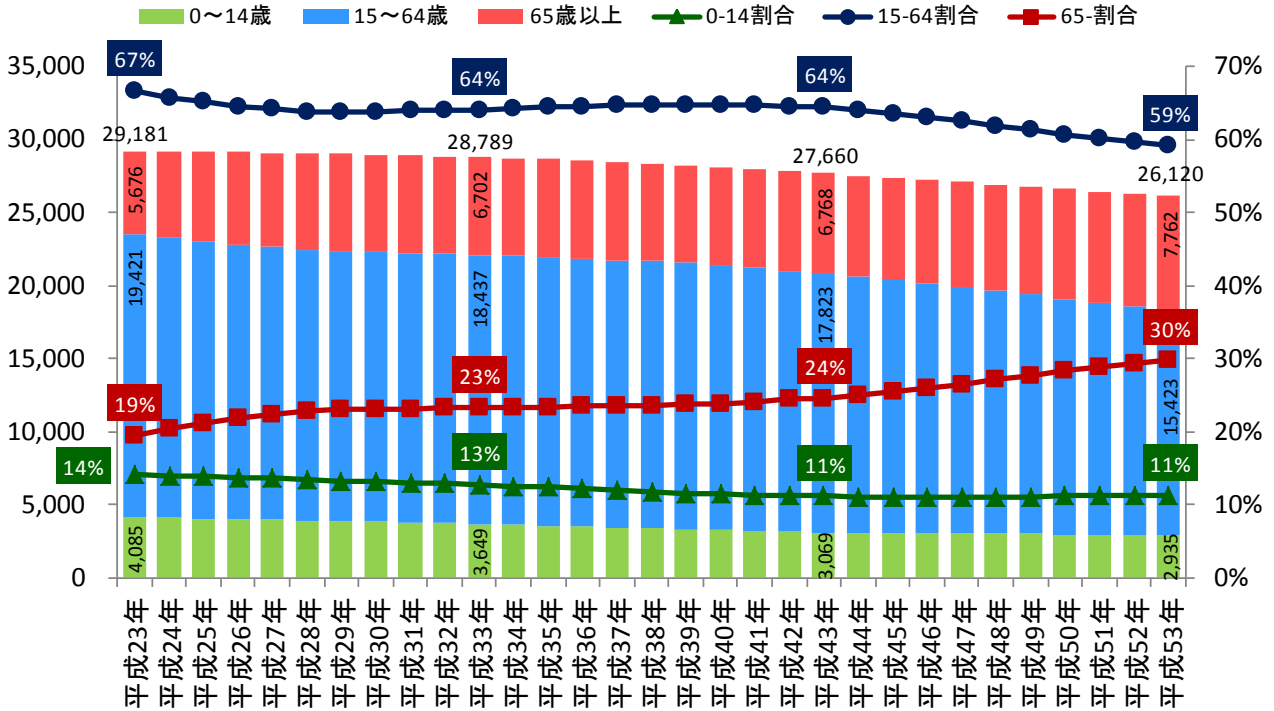
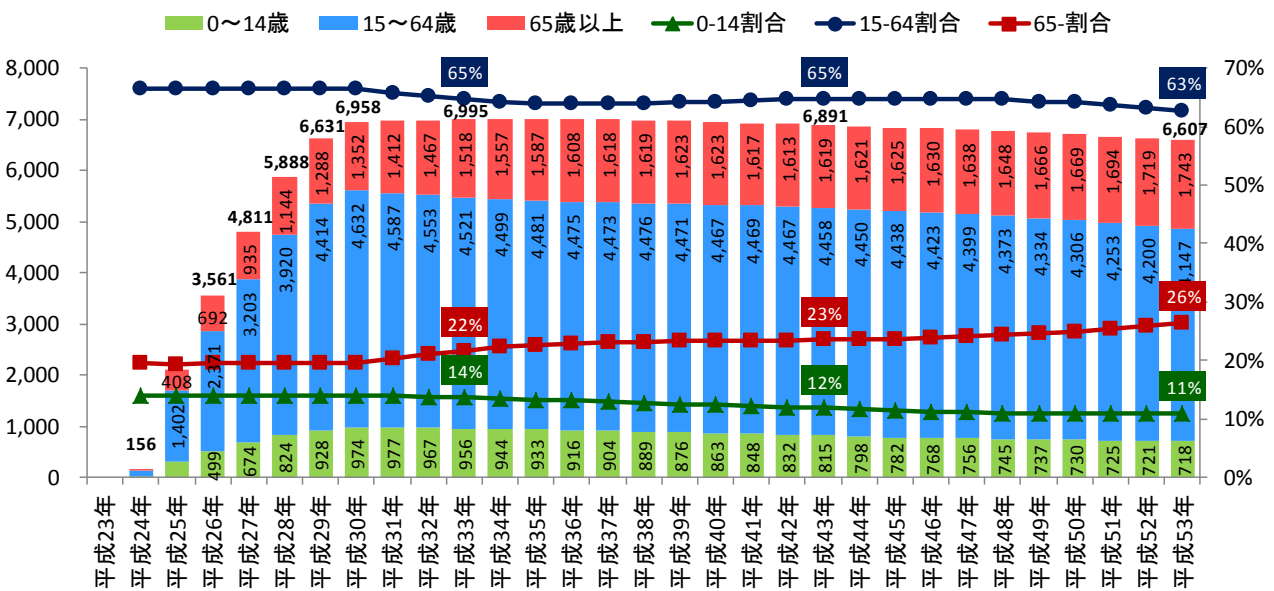


A. 谷津・向山



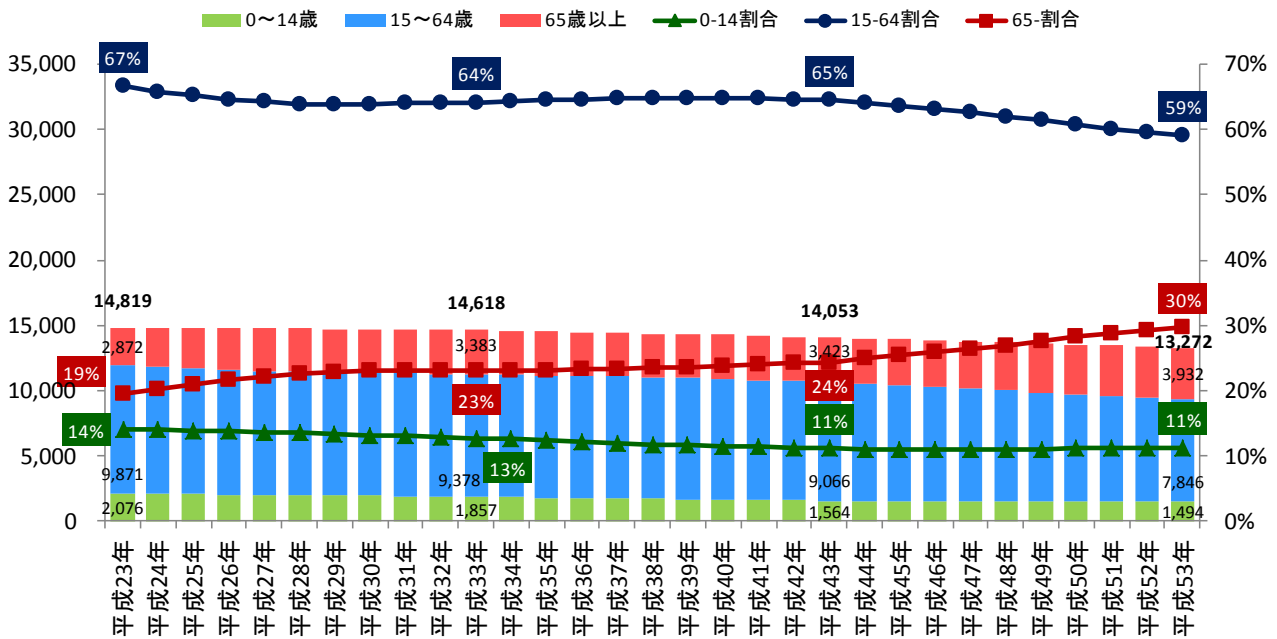
(出所) 習志野市人口統計調査

(2) JR津田沼駅南口開発による人口増加



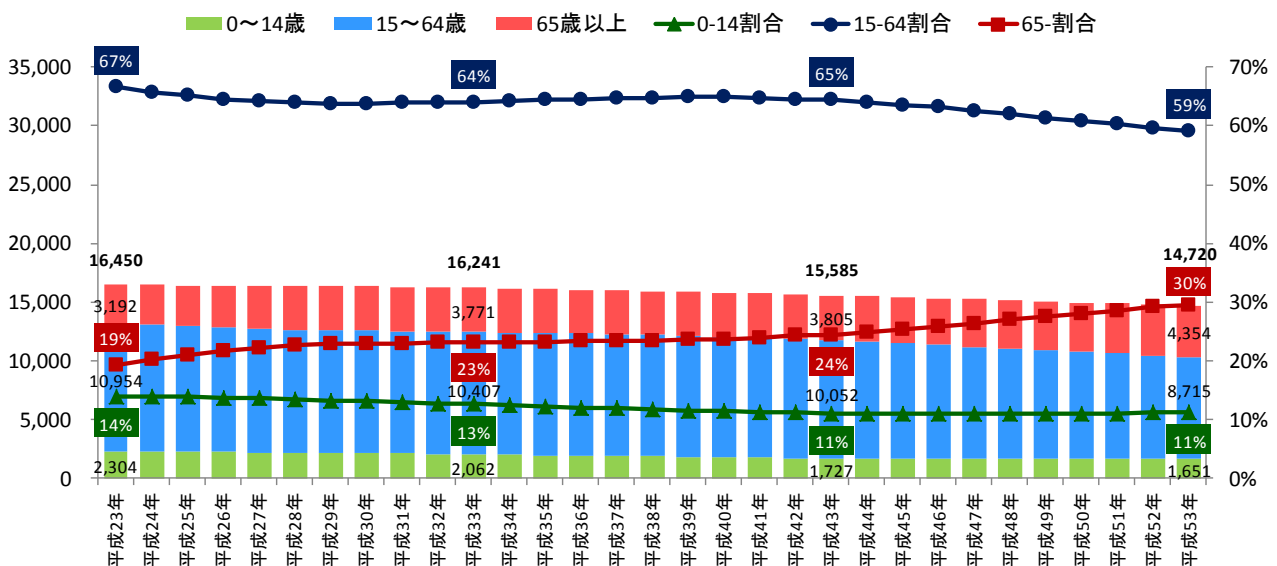
B. 藤崎、津田沼、鷺沼・鷺沼台

B-1. 藤崎



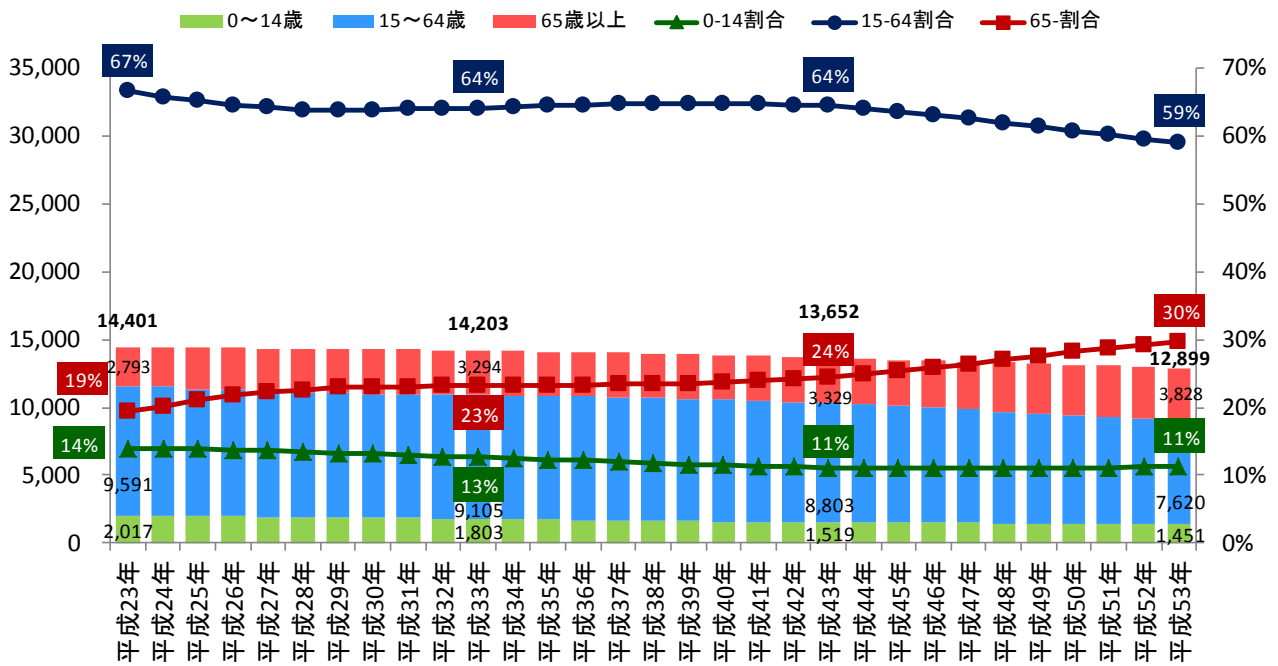
(出所) 習志野市人口統計調査

B-2. 津田沼

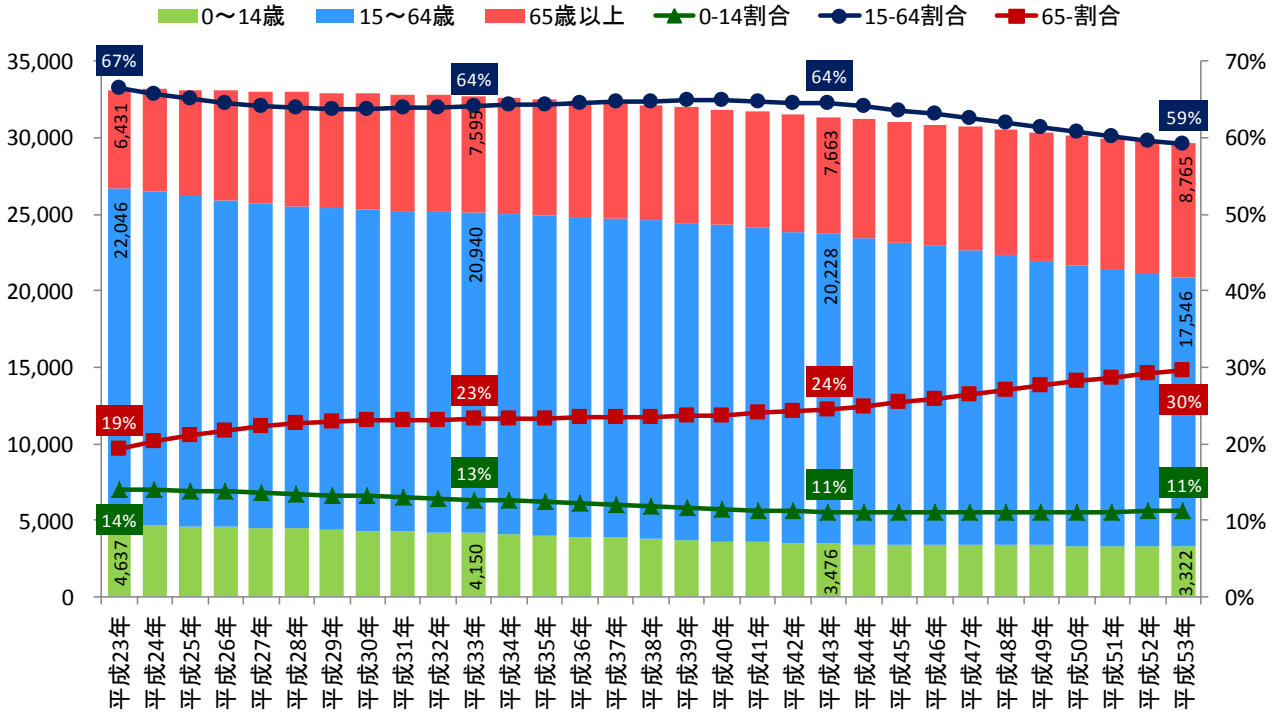


(出所) 習志野市人口統計調査

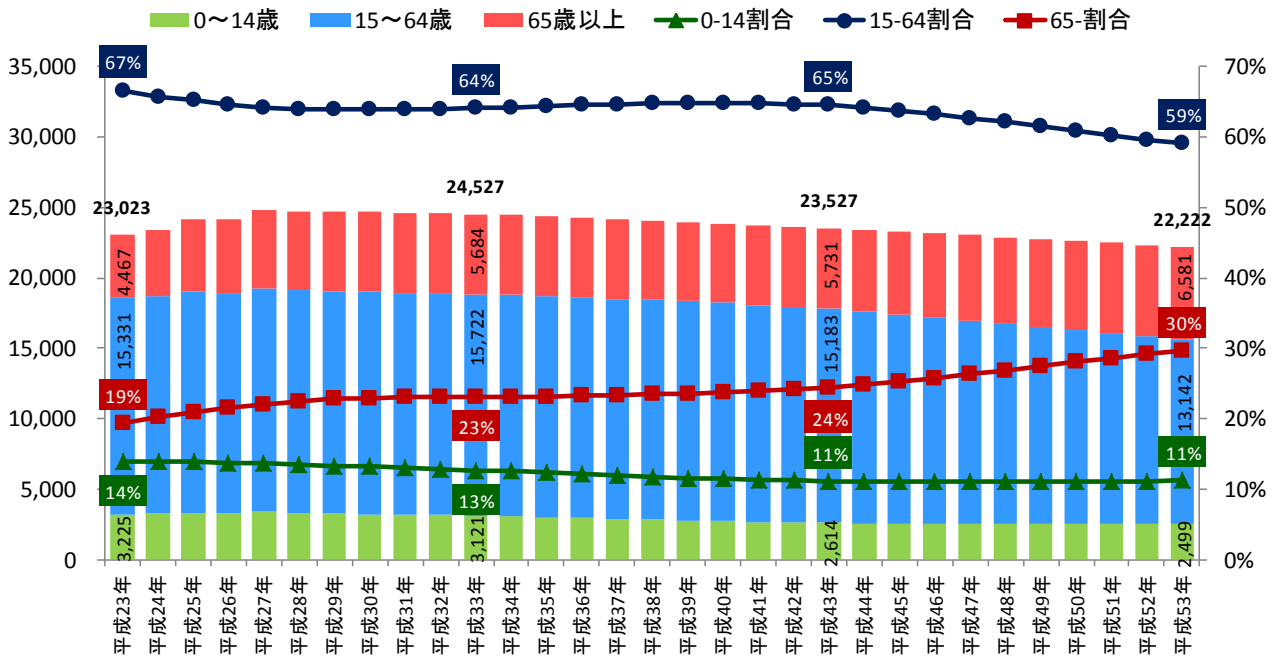
B-3. 鷺沼・鷺沼台



C. 大久保・泉・本大久保・花咲・屋敷

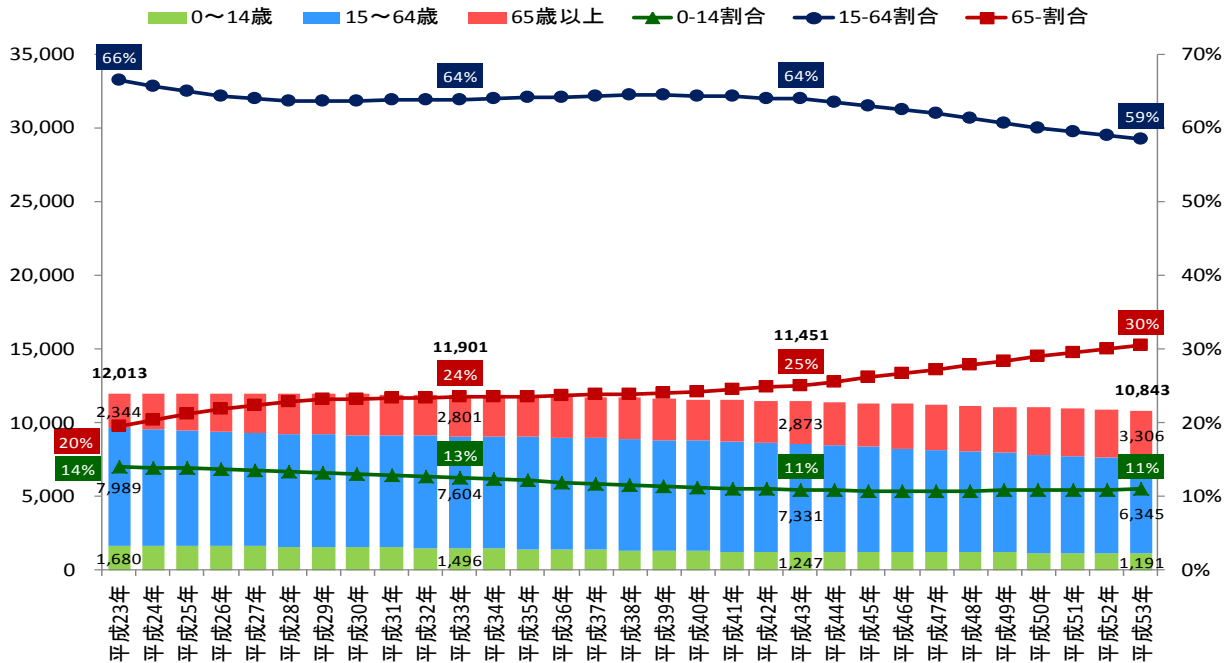


D. 実花・東習志野・実籾・新栄



E. 袖ヶ浦、秋津・茜浜・香澄・芝園

E-1. 袖ヶ浦



E-2. 秋津・茜浜・香澄・芝園

